

Ashtons



56 Thirkleby Way Osbaldwick YO10 3QD

£1,500 PCM

4



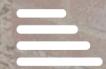
2



1



D



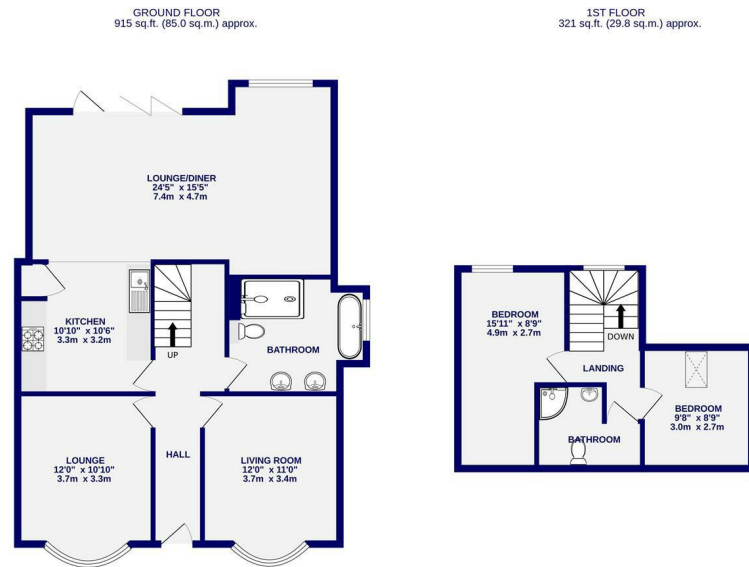
WE ARE NOW FULLY BOOKED FOR VIEWINGS ON THIS PROPERTY

A detached, extended dormer bungalow in the popular village of Osbaldwick, coveted for its position for easy access to the city centre and outer ringroad, with many local amenities on offer. Offered for let on an unfurnished basis and with flexible layout offering up to four bedrooms. The accommodation comprises entrance hallway with bay fronted, double sized rooms on either side leading through to a spacious open plan kitchen, dining and living space with bifold doors to the rear garden. The kitchen is equipped with an electric oven, gas hob and integrated fridge and freezer. Plumbing for a washing machine is located under the stairs. On the ground floor there is also a large bathroom with walk in shower, bath and double vanity. To the first floor is a double bedroom, single bedroom and shower room.

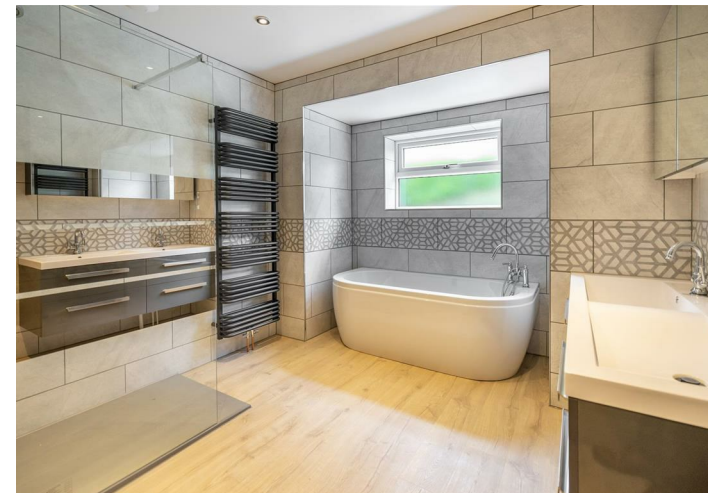
Externally the property benefits from driveway parking, garage, front and rear hard landscaped garden.

Available 1st July / 12 Month Tenancy / Deposit £1600 / Council Tax Band C / EPC Rating D

NOTE: This property does not have a HMO license and is not available for three or more sharers.



TOTAL FLOOR AREA: 1235 sq.ft. (114.8 sq.m.) approx.
Whilst every attempt has been made to ensure the accuracy of the floorplan, measurements of rooms and any other items are approximate. If included in the plan the gas/appliances will form part of the overall floor area and no responsibility is taken for any error, omission or mis-statement. This plan is for illustrative purposes only and should be used as such by any prospective purchaser. The services, systems and appliances shown have not been tested and no guarantee as to their operability.
Made with Metropix 02/25



Ashtons Lettings

01904 731404

lettings@ashtonsnet.com